

VEDERE IN PLAN PODET PIETONAL

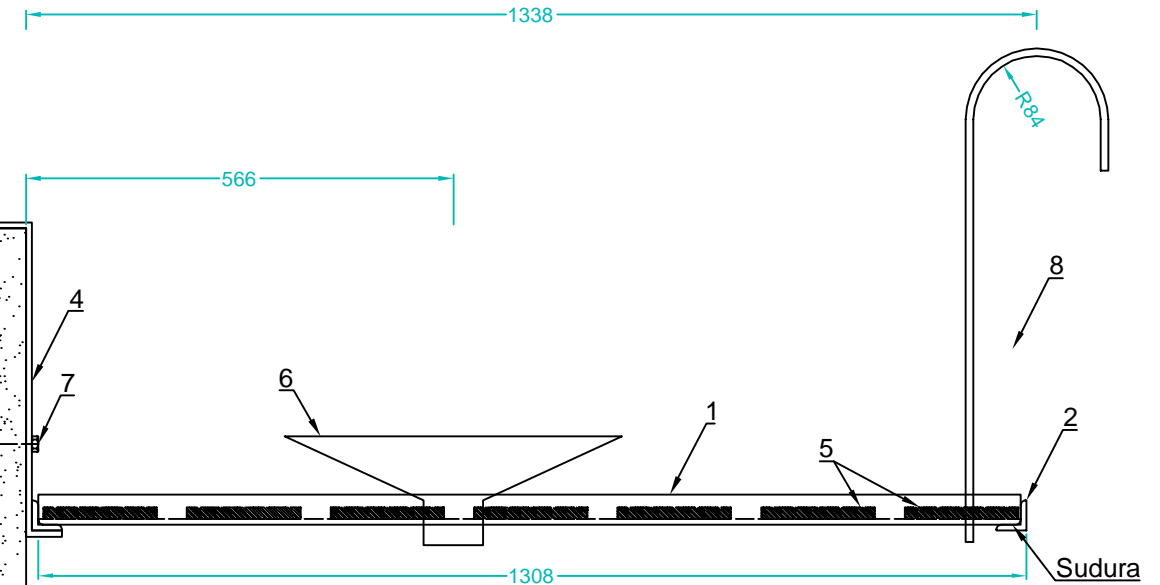
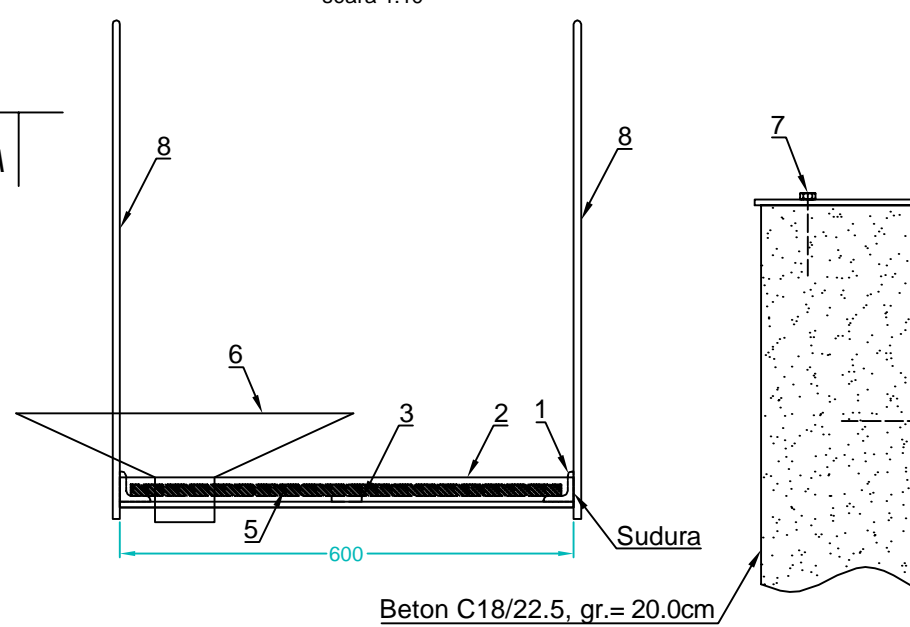
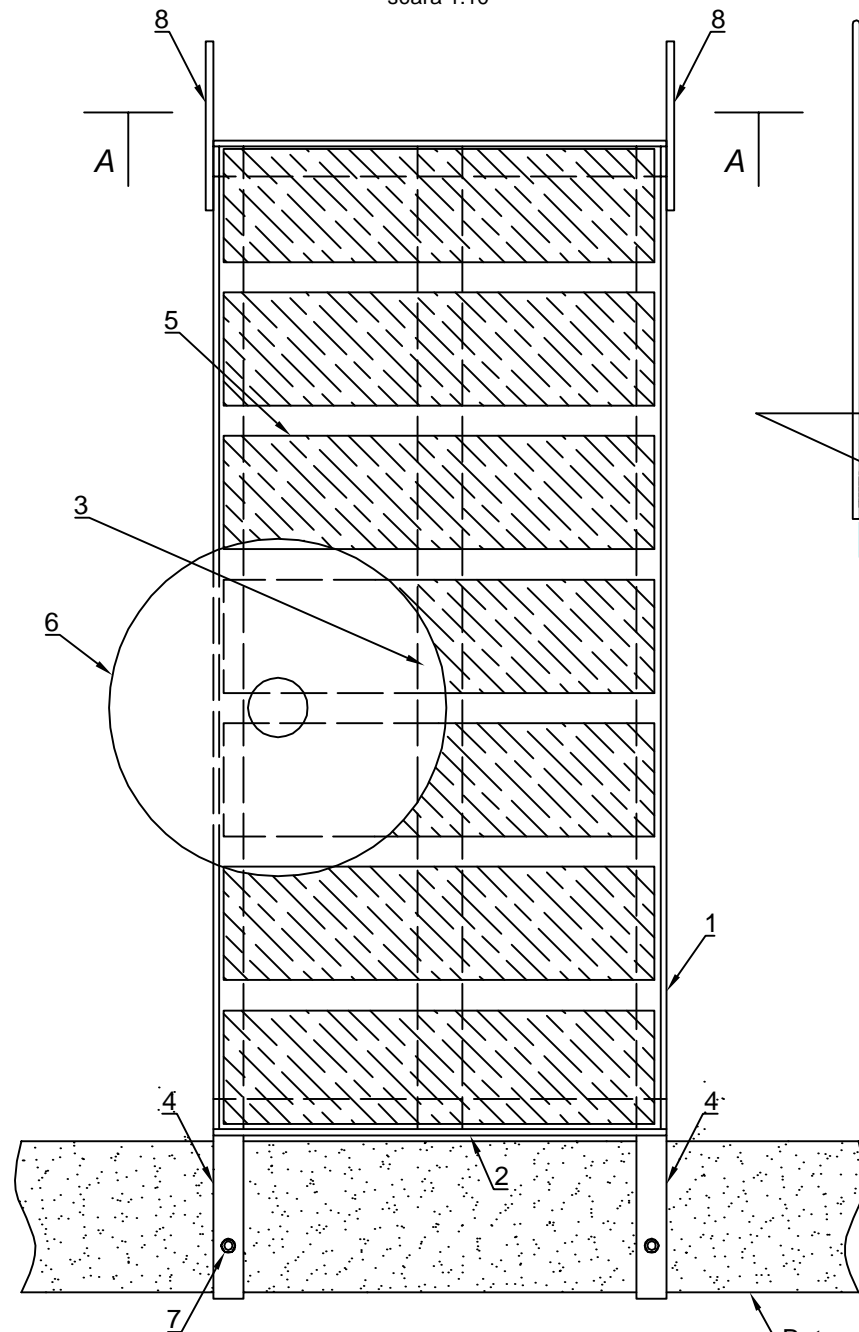
scara 1:10

VEDERE A - A

scara 1:10

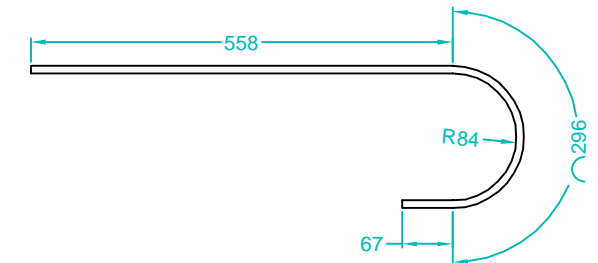
VEDERE LATERALA

scara 1:10



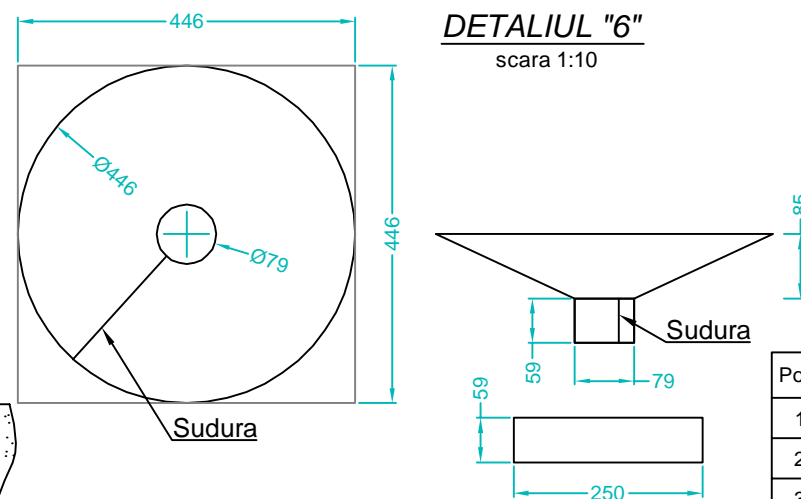
DETALIUL "8"

scara 1:10



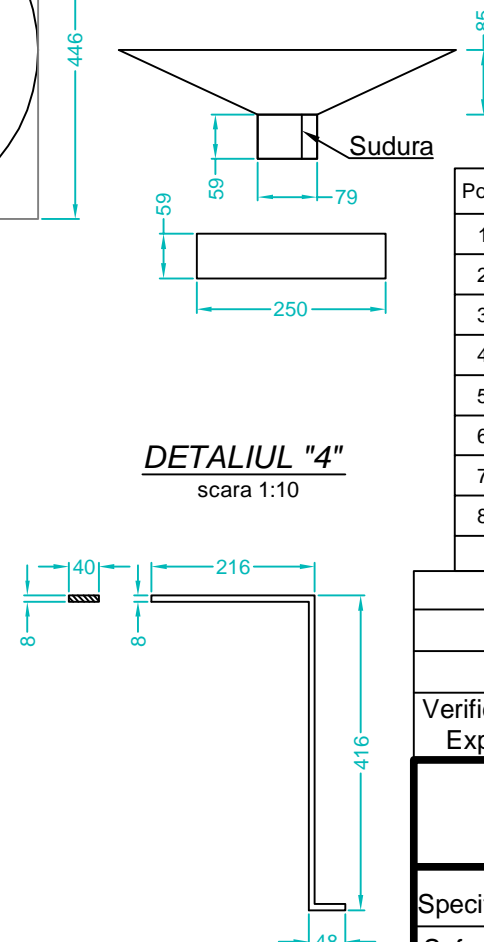
DETALIUL "6"

scara 1:10



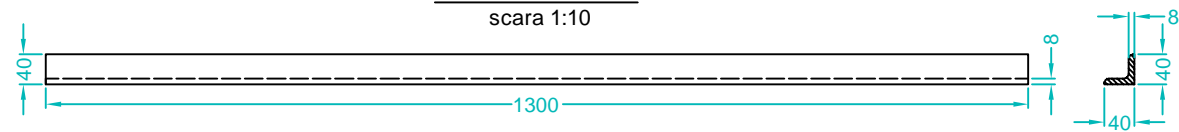
DETALIUL "4"

scara 1:10



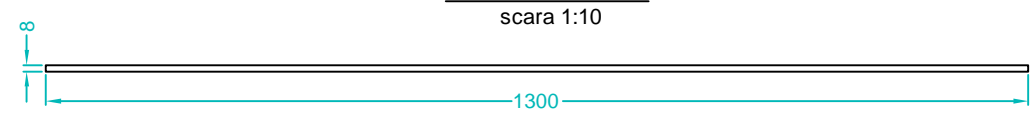
DETALIUL "1"

scara 1:10



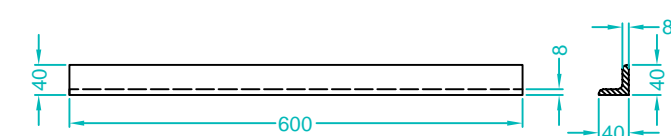
DETALIUL "3"

scara 1:10



DETALIUL "2"

scara 1:10



Poz.	DENUMIRE	DIMENSIUNI [mm]	MASA / m [Kg]	STAS	LUNGIME [m]	BUC.	MASA [Kg]
1	Cornier metalic	40 x 40 x 8	4.55	SR EN 10056 - 1:2000	1.30	2	11.83
2	Cornier metalic	40 x 40 x 8	4.55	SR EN 10056 - 1:2000	0.60	2	5.46
3	Otel lat	60 x 8	3.77	SR EN 10058:2004	1.30	1	4.90
4	Otel lat	40 x 8	2.51	SR EN 10058:2004	0.68	2	3.41
5	Scandura lemn	150 x 15	-	-	0.57	7	
6	Palnie tb. 2mm	466 x 466 + 59x250		SR EN 10029/2011		1	3.64
7	Ancora conexpand FBN II	110 - M12				4	
8	Fier rotund	Ø10	0.617	PC 52	0.92	2	1.14
TOTAL GREUTATE [Kg]							30.38

Verificator/Expert				Referat / Expertiza Nr. / Data			
S.C. SNIF PROIECT S.A. Targoviste Numar de inmatriculare J15/925/2005				Beneficiar: CONPET S.A. PLOIESTI			Pr. nr. 310
Specificatie	Nume	Semnatura	Scara: 1:10	"Inlocuire conducta de transport titei 6 5/8" Ochiuri-Moreni, in zona statie Ochiuri - traversare parau Slanic, in lungime de cca. 600m si in zona islaz Ocnita in lungime de cca. 3000m (total cca. 3600m) si refacere instalatie de lansare curatitoare din incinta Statiei Ochiuri"			Faza PT+CS+DE
Sef proiect	Ing. Costea Paul						
Desenat	Ing. Radu Florin						
Proiectat	Ing. Costea Paul		Data: 2015	Detaliu podet pietonal			Pl. nr. 7.4